



Human Chip

第二組

B96901048 李 琦

B96901135 朱振愷

B96901169 陳彥光

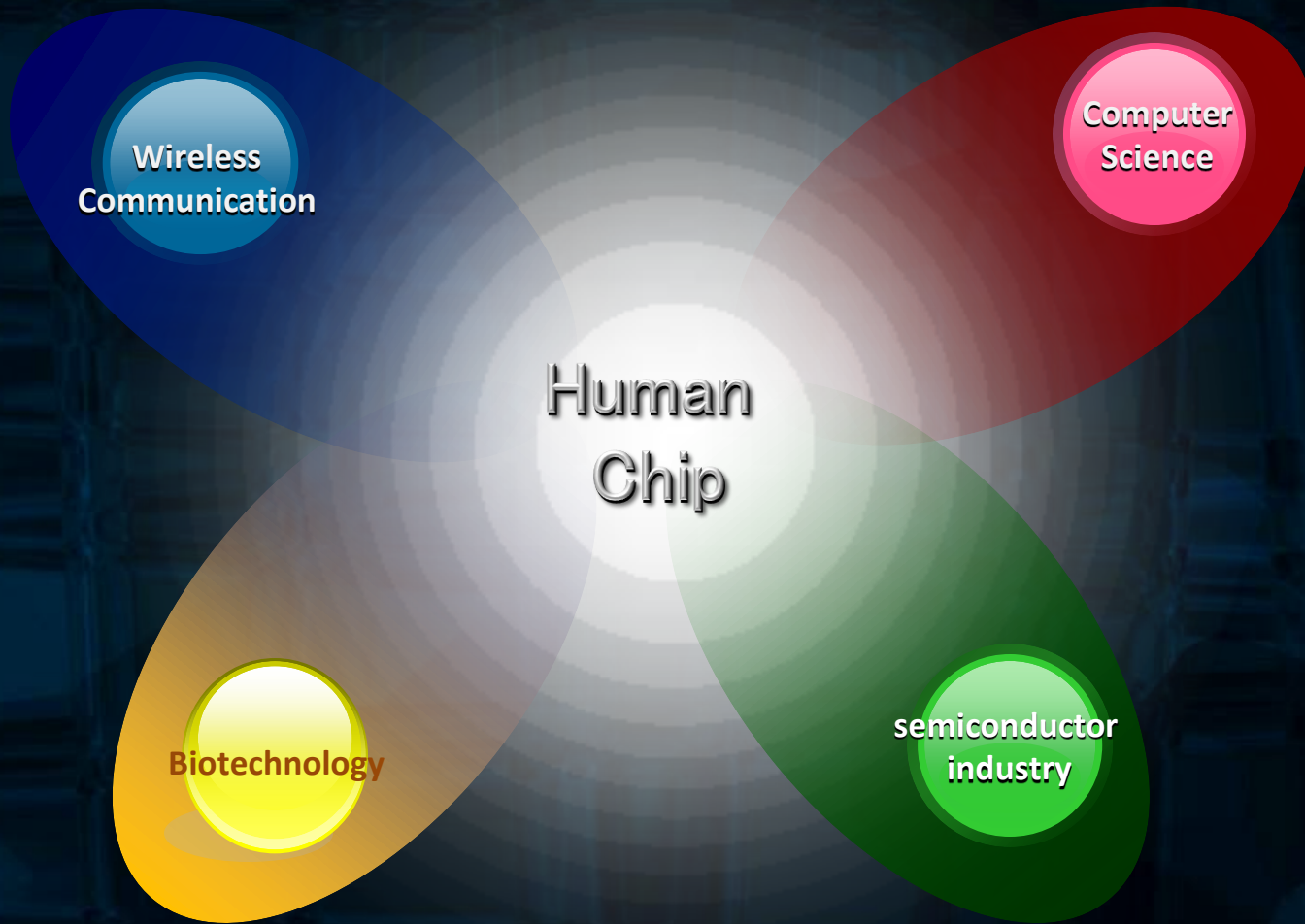
Outline

“Human Chip” ?

Some instances

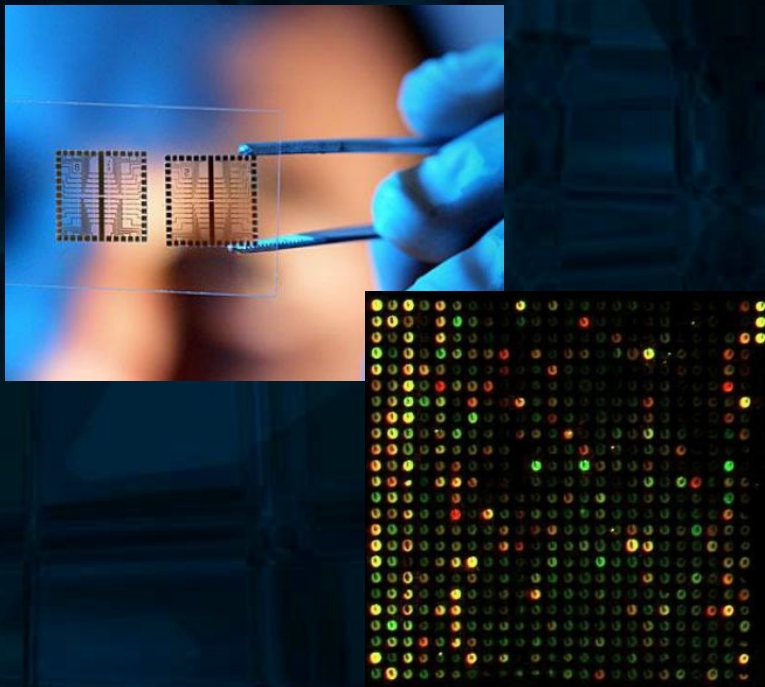
Conclusion

Human chip?



Biochip V.S. Human chip

Biochip



Human chip

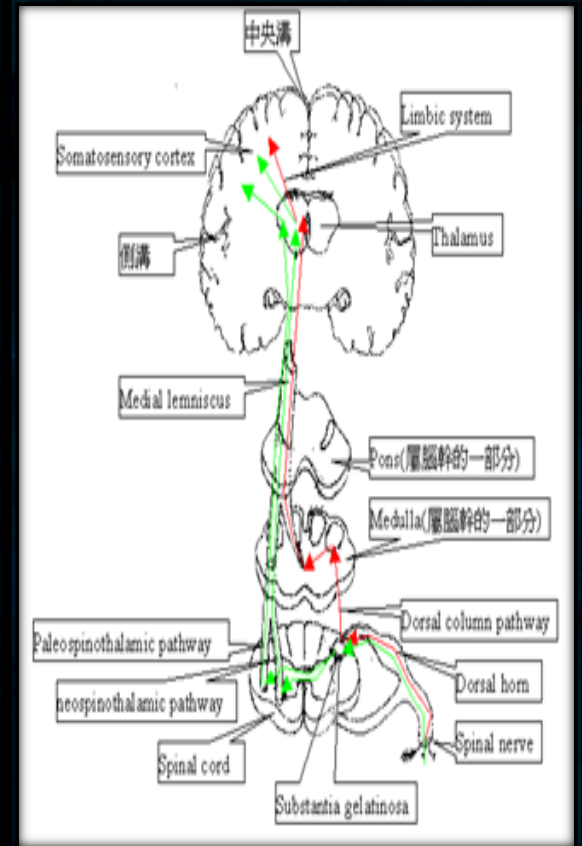
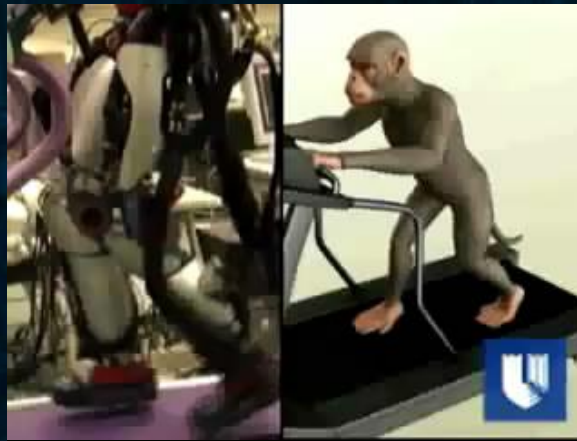




Brain Machine Interface

Brain Machine Interface

Principle
Application
Defect
Future?





Human RFID chip

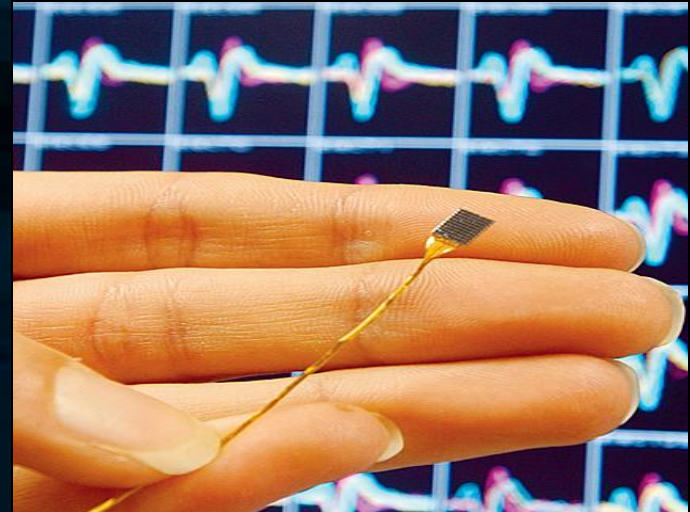
Human RFID chip

Principle

Application

Defect

Future?

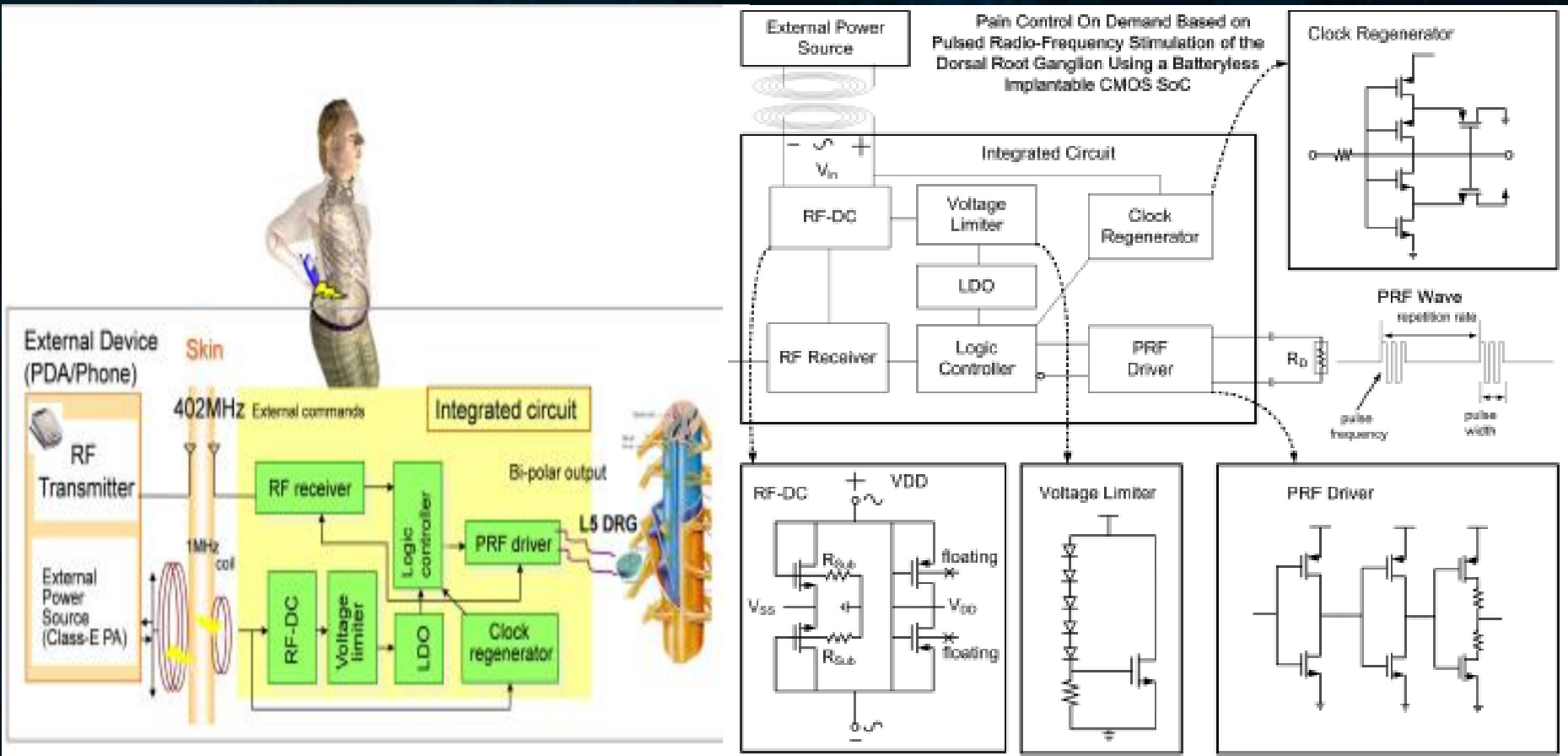




Pain Control Implantable Soc

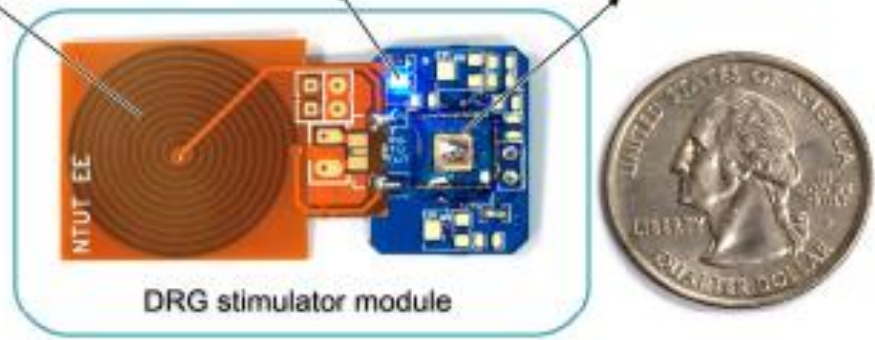
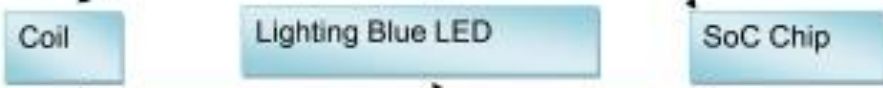
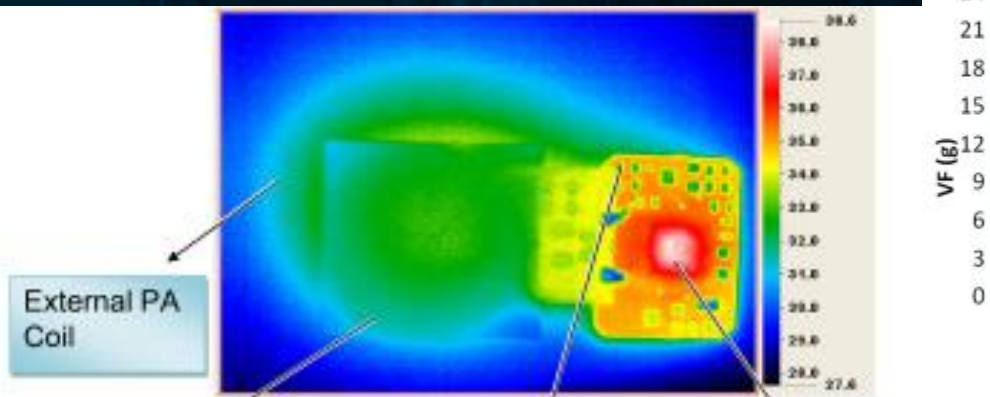
Pain Control Implantable Soc

Principle

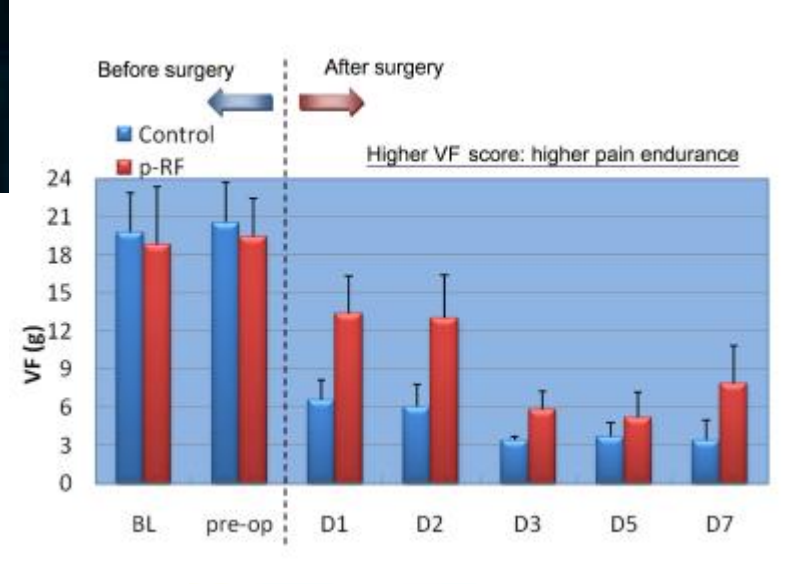


Pain Control Implantable Soc

Application



- A: RF rectifier
- B: LDO for receiver
- C: Receiver
- D: Microcontroller
- E: LDO for MCU
- F: Output buffer
- G: Voltage limiter



Pain Control Implantable Soc

	傳統(熱凝)	晶片
有效期	3~6個月 	約3個月
需重覆手術	需要(每當失效後)	不用(僅植入時一次) 
價格	自費5000	成本低於鼎泰豐? 

	舊	新
有效期	5~10年 	約3個月
大小	約6平方公分	約1.5平方公分 
價格	40~50萬	10萬元下 
電力	用電池(沒電要換)	外部無線電感應(手機) 
電壓	40V	3.7V 
上市	已有	5年內上市

Conclusion

